

**Workshop at the  
17th International World Wide Web Conference  
April 22, 2008**

# **Linked Data on the Web**

**Tim Berners-Lee, W3C/MIT  
Christian Bizer, Freie Universität Berlin  
Tom Heath, Talis  
Kingsley Idehen, OpenLink Software**

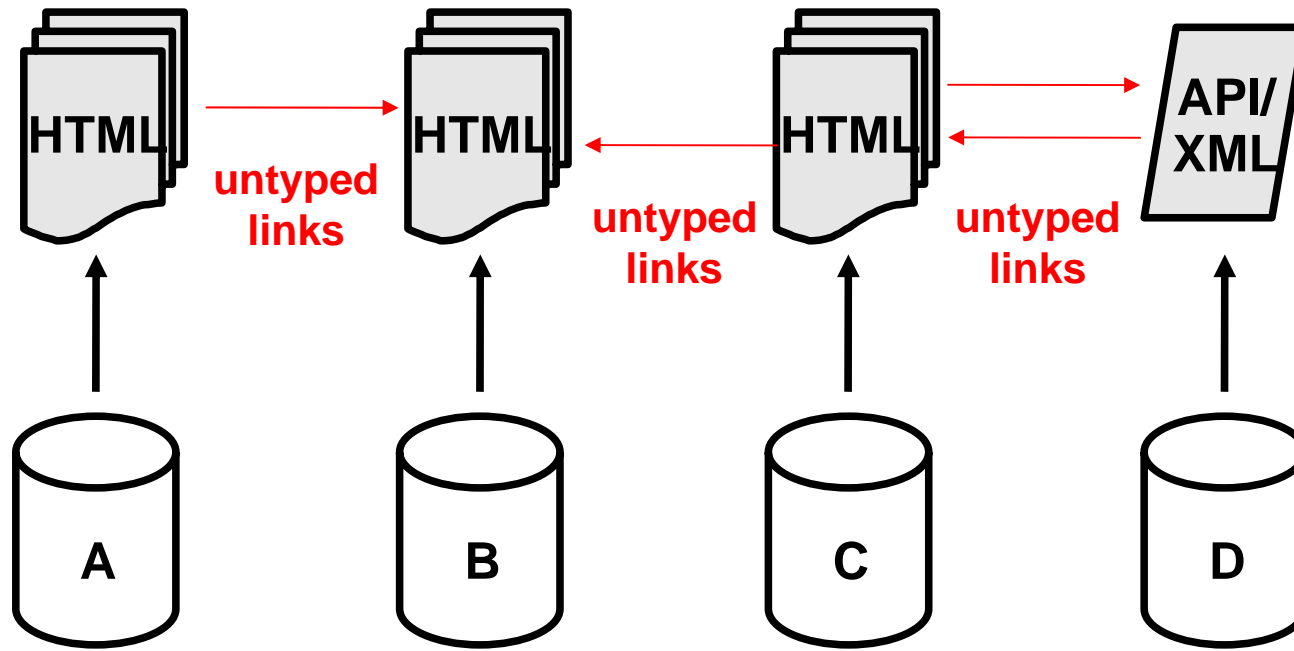
# **The Web of Documents and the Web of Data**

# The Web of Documents

- **Analogy**
  - a global **filesystem**
- **Designed for**
  - **human** consumption
- **Primary objects**
  - **documents**
- **Links between**
  - **documents** (or sub-parts of)
- **Degree of structure in objects**
  - fairly **low**
- **Semantics of content and links**
  - **implicit**



# The Web of Documents



# The Web of Documents: Issues

## ■ **Simplicity**

- **Loosely structured data, untyped links, disconnected data sets**

## ■ **Integration**

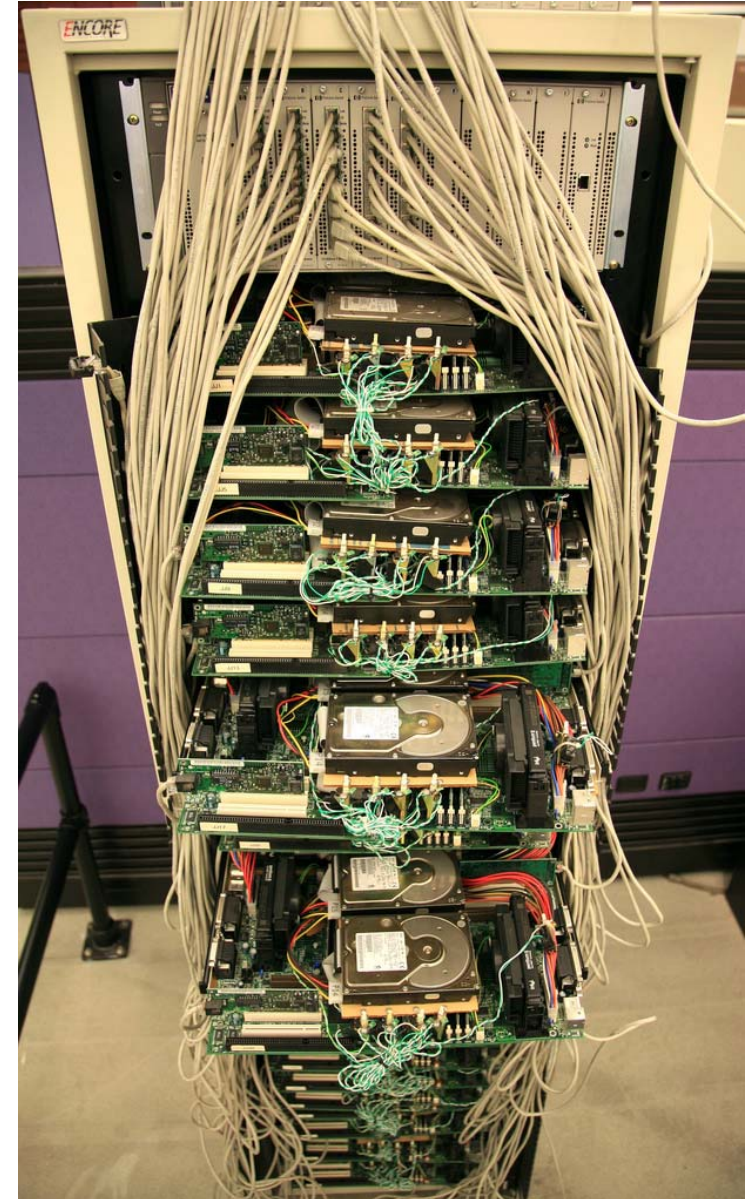
- **Show me all the publications from Semantic Web-related conferences in 2007**

## ■ **Querying**

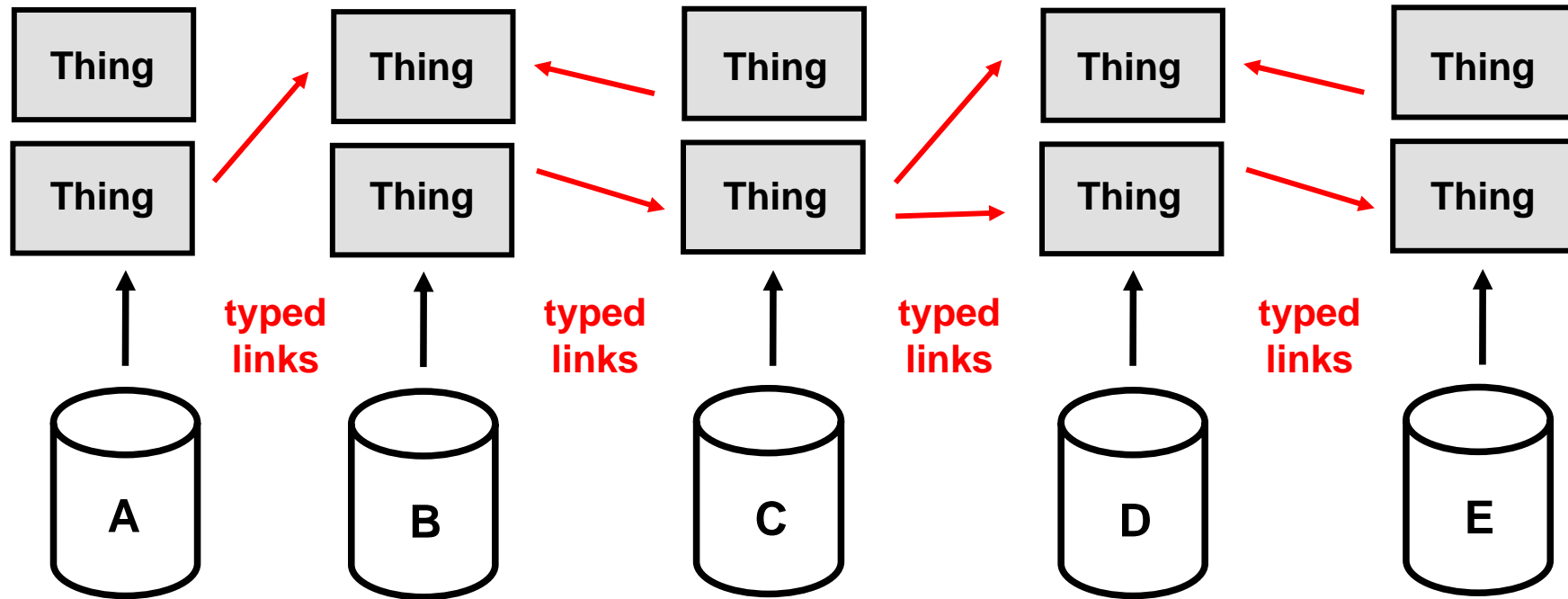
- **Which WWW2008 papers have been written by people from companies of less than 100 people?**

# The Web of Data

- **Analogy**
  - a global **database**
- **Designed for**
  - **machines** first, **humans** later
- **Primary objects**
  - **things** (or descriptions of things)
- **Links between**
  - **things** (including documents)
- **Degree of structure in (descriptions of) things**
  - high
- **Semantics of content and links**
  - explicit



# The Web of Data



# Linked Data Principles

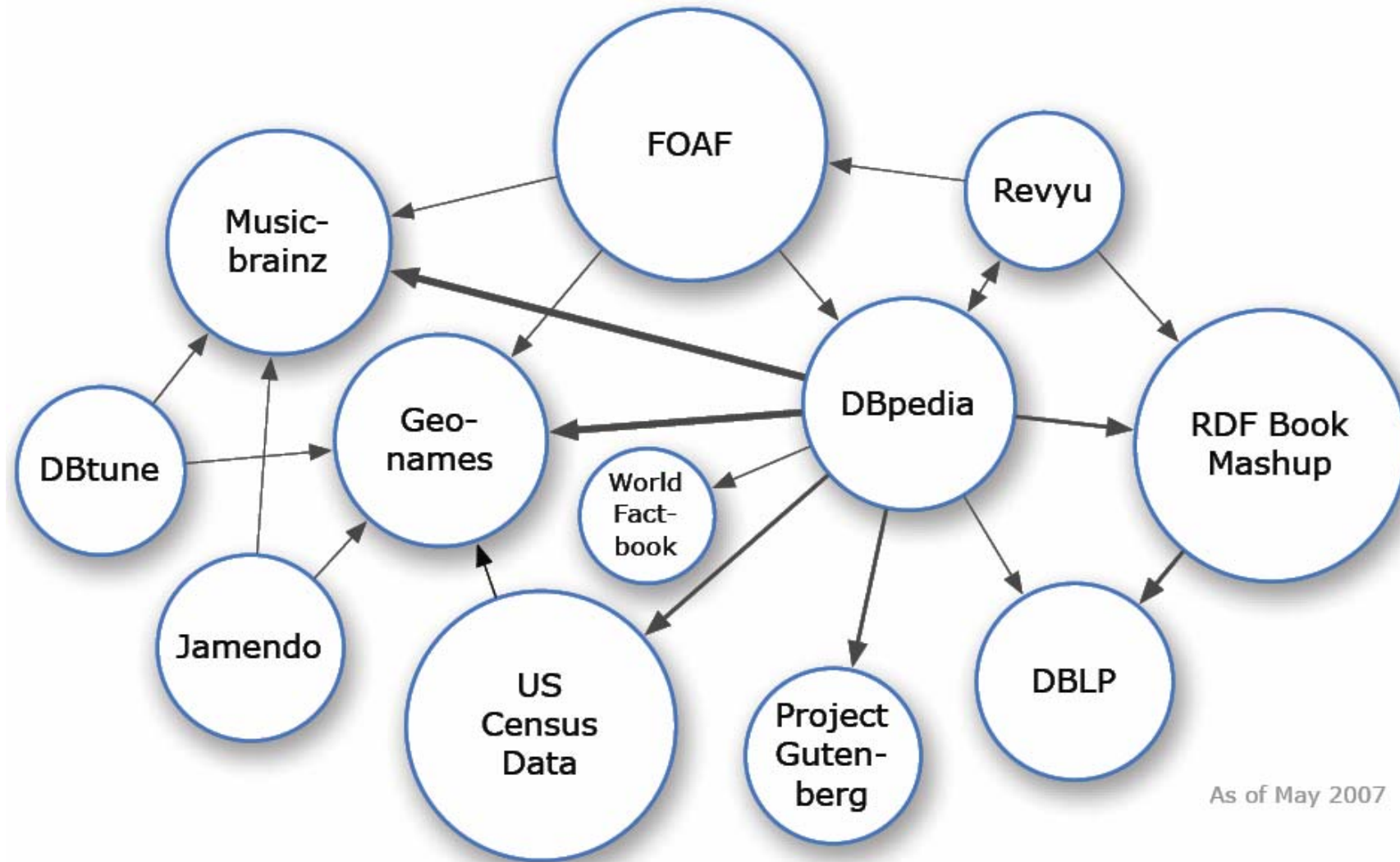
- 1. Use URIs as names for things**
- 2. Use HTTP URIs so that people can look up those names**
- 3. When someone looks up a URI, provide useful RDF information**
- 4. Include RDF statements that link to other URIs so that they can discover related things**

**Tim Berners-Lee 2007**

**<http://www.w3.org/DesignIssues/LinkedData.html>**

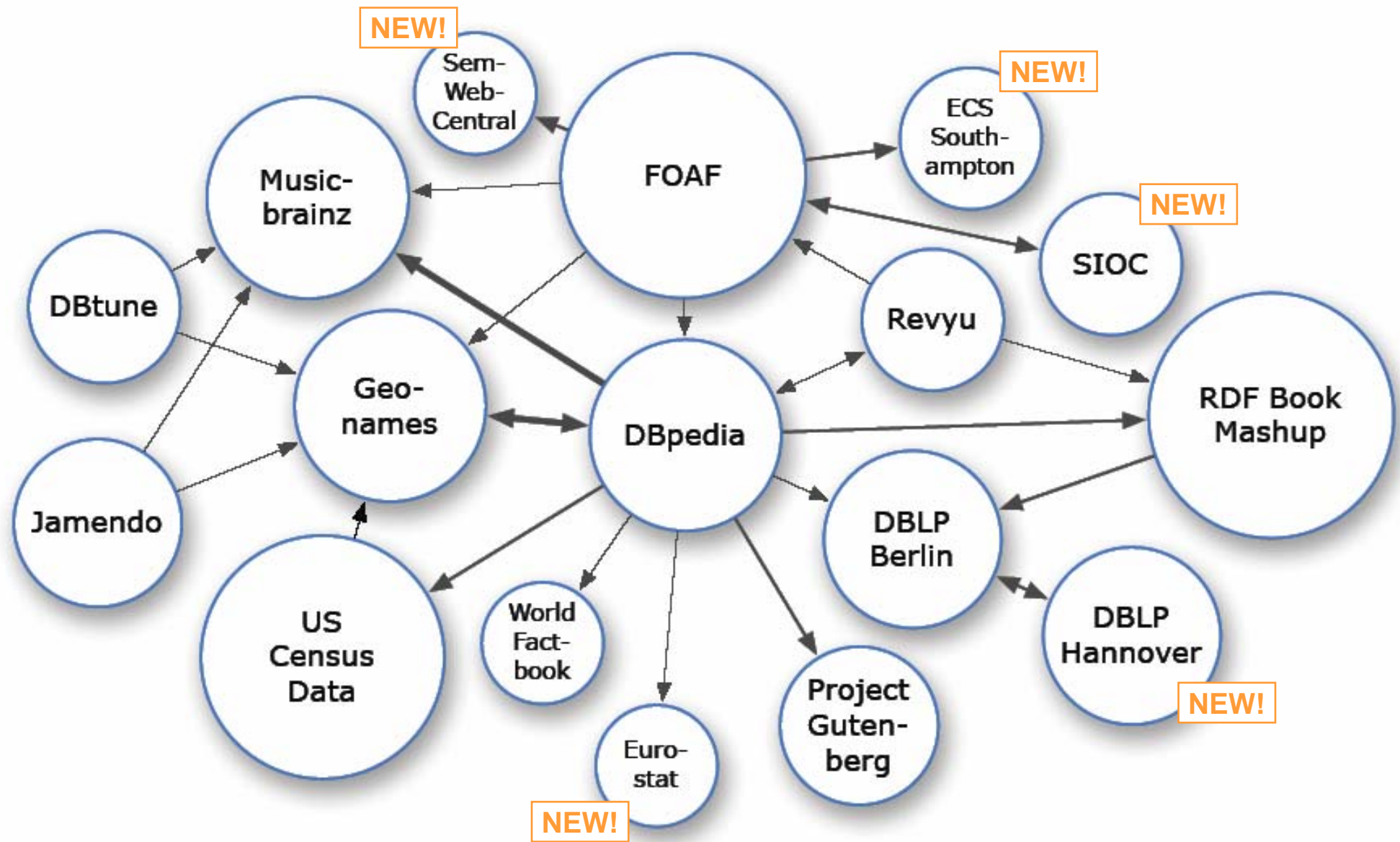


# Linked Data on the Web: May 2007

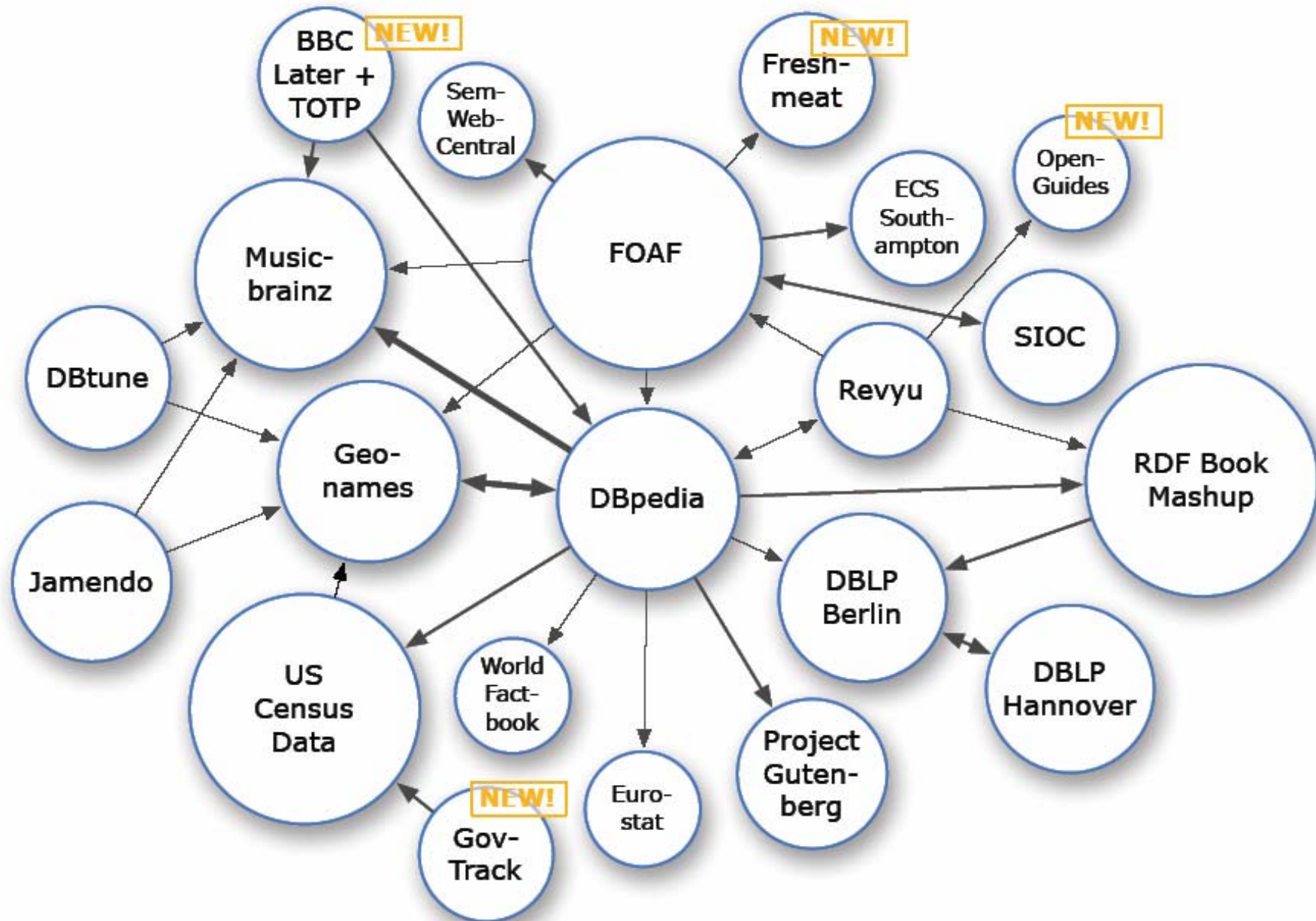


- Over 500 million RDF triples
- Around 120,000 RDF links between data sources

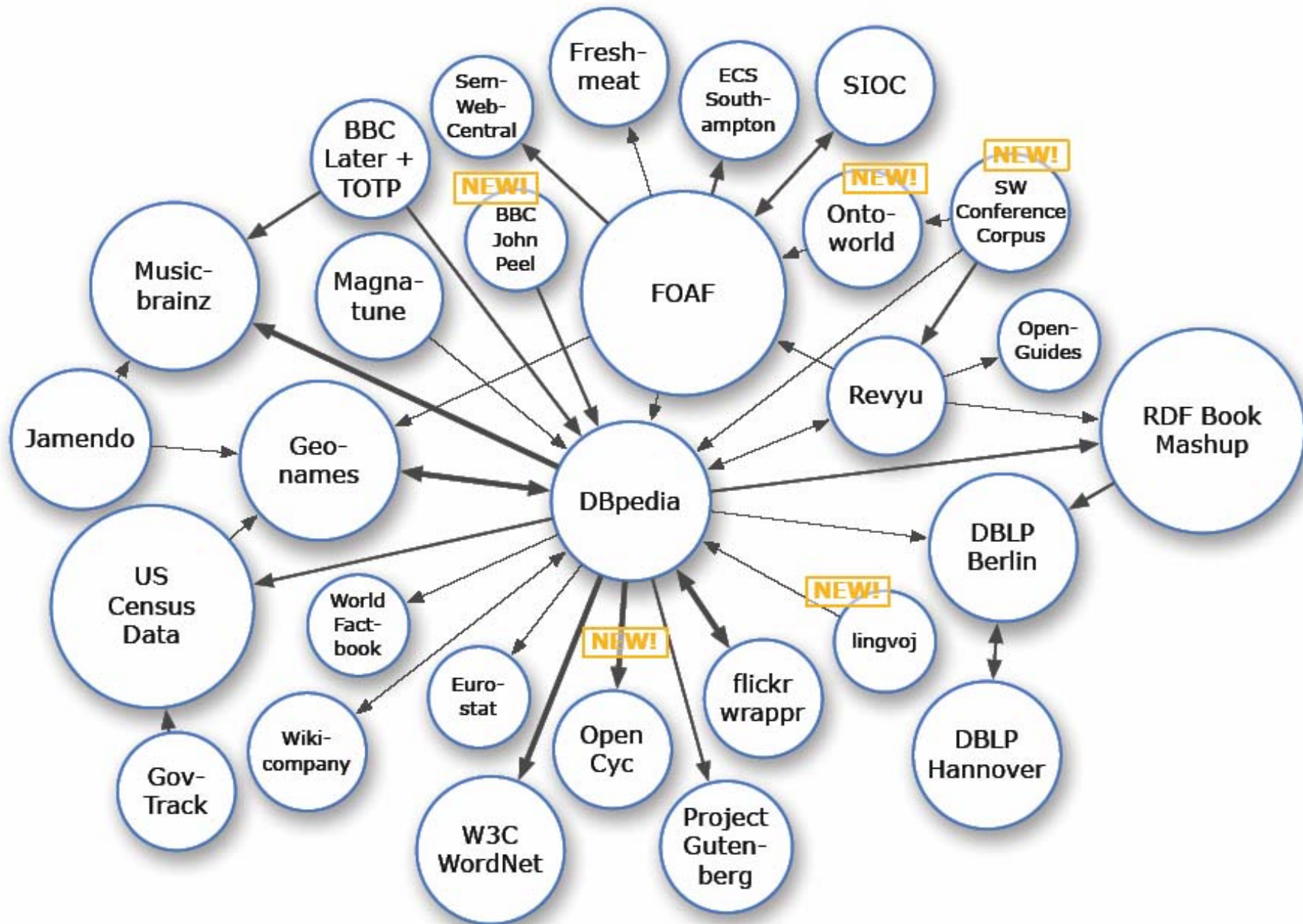
# Linked Data on the Web: July 2007



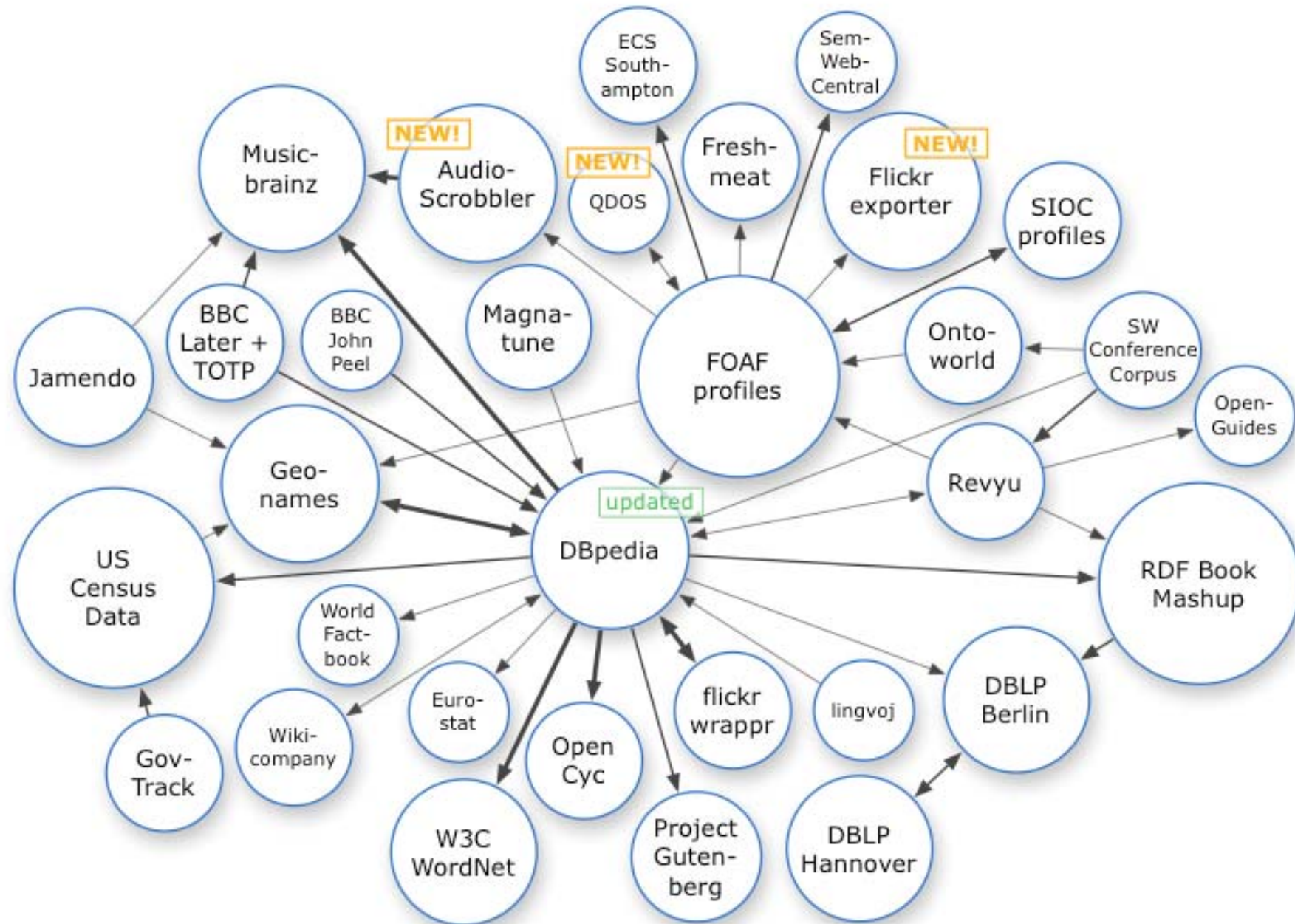
# Linked Data on the Web: August 2007



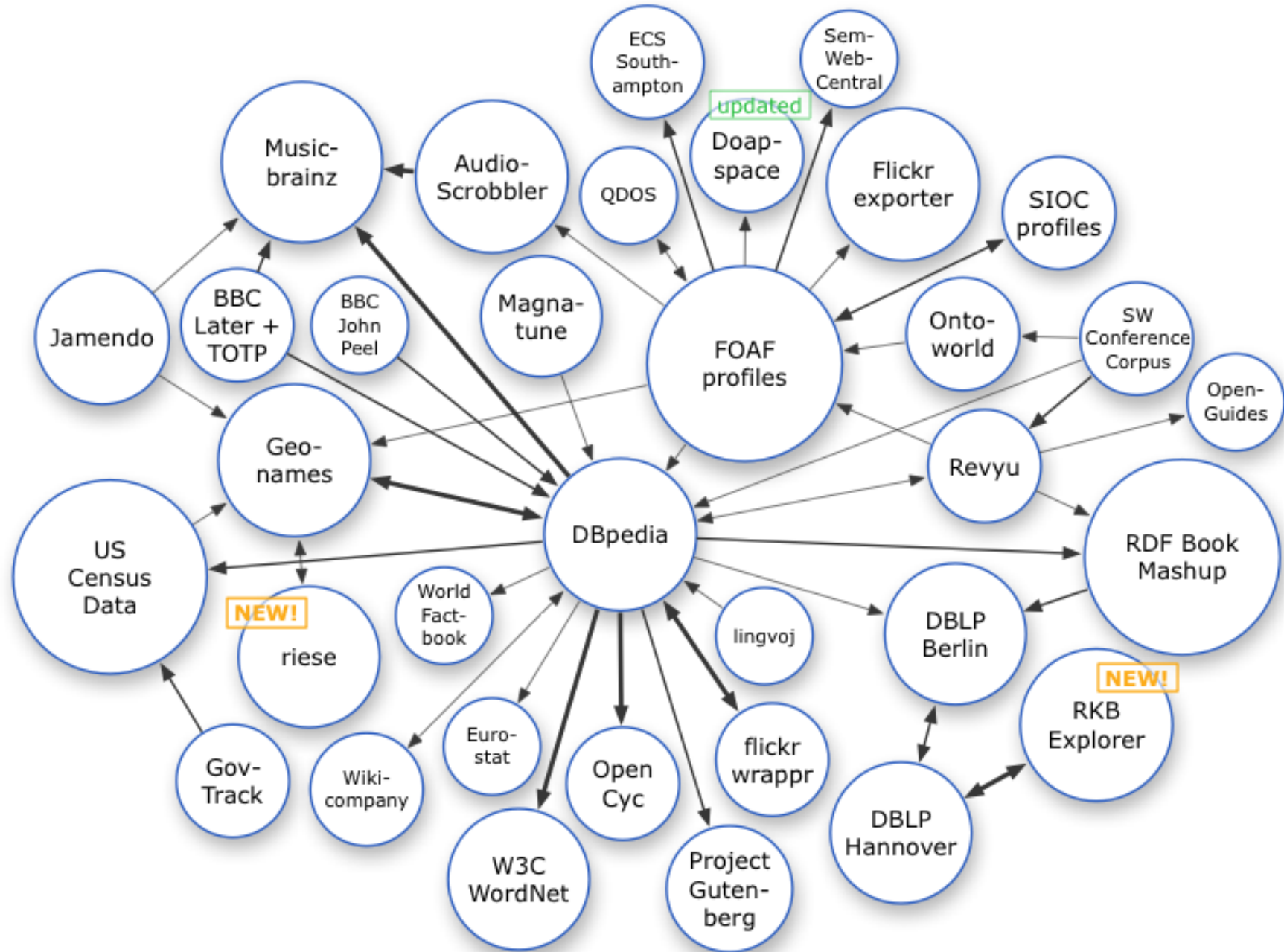
# Linked Data on the Web: November 2007



# Linked Data on the Web: February 2008



# Linked Data on the Web: April 2008



# Triple Count

- **More than 2 billion RDF triples**
- **Interlinked by around 3 million RDF links**

**(rough estimates)**

# Linked Data Browsers

- **Tabulator Browser (MIT, USA)**
- **Disco Hyperdata Browser (FU Berlin, DE)**
- **OpenLink RDF Browser (OpenLink, UK)**
- **Zitgist RDF Browser (Zitgist, USA)**
- **Humboldt (HP Labs, UK)**
- **Fenfire (DERI, Ireland)**
- **Marbles (FU Berlin, DE)**



# Web of Data Search Engines

- **Falcons (IWS, China)**
- **Sindice (DERI, Ireland)**
- **Watson (Open University, UK)**
- **SWSE (DERI, Ireland)**
- **Swoogle (UMBC, USA)**
- **MicroSearch (Yahoo, Spain)**

# Structure of the Day

## **1. Session: Populating the Web with Linked Data**

**8:50-10:10**

**10:30-12:10**

## **2. Session: Consuming Linked Data from the Web**

**13:30 – 3:10**

## **3. Session: Architecture and Conceptual**

**15:30 – 17:30**

## **4. Discussion about further Research and Deployment Agenda**

**17:30 – 18:00**